

A Short Tutorial on Life Governed by the Plantation Management Association

The St Andrews East communities are managed by the associations listed below and two state statutes section 718 for condo (COA) and 720 (HOA) homeowners.

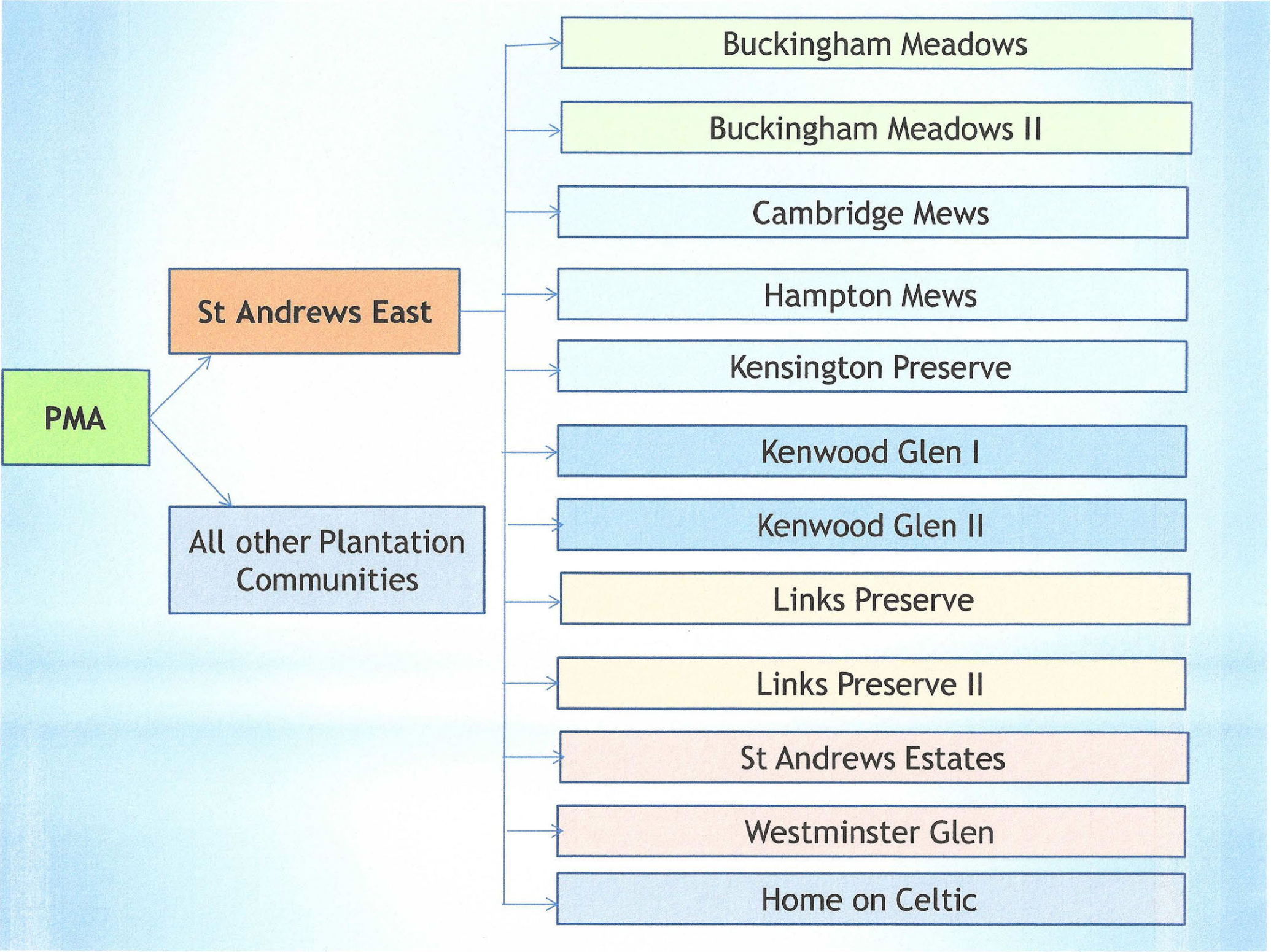
We included the others for completeness along with an organizational chart.

1. **Plantation Management Association (PMA-HOA)** is the Master association for all of Plantations 2401 units that are managed by 49 associations including two master associations. Their major responsibilities include the landscaping along Rockley Boulevard up to the far side of the sidewalk, front entrance landscaping along Rt 41 and Center Rd, all the ponds and associated pipes and weirs and preserve areas. PMA major expense items are landscaping, property management and lake maintenance. PMA is funded by direct billing of homeowners every January. The PMA board members are elected by all the homeowners at the annual meeting.
2. **St. Andrews East Association (SAE-HOA)** is one of the two master associations under PMA, the other is St. Andrews Park. SAE has 12 associations, the smallest is 1 home and the largest, the 40 condo units. Its Board of Directors (BOD) is elected by the presidents of the 12 associations. Each president gets one vote for every home in their association. SAE responsibilities are the maintenance of the 2 pools, club house, roads and the landscaping that is not maintained by PMA or the individual associations. It is funded by an assessment per quarter to each of the 317 homeowners. That assessment is paid quarterly to SAE by your individual associations and is included in your local association's dues.
3. **Your local association** is either a COA or HOA as governed by your association documents and Florida State statutes.

Detailed budgets are available to any homeowner from the appropriate property manager. Most associations have websites which contain a wealth of information.

Hopefully, this helps tie it altogether.

SAE Board of Directors



PMA

St Andrews East

All other Plantation
Communities

Buckingham Meadows

Buckingham Meadows II

Cambridge Mews

Hampton Mews

Kensington Preserve

Kenwood Glen I

Kenwood Glen II


Links Preserve

Links Preserve II

St Andrews Estates

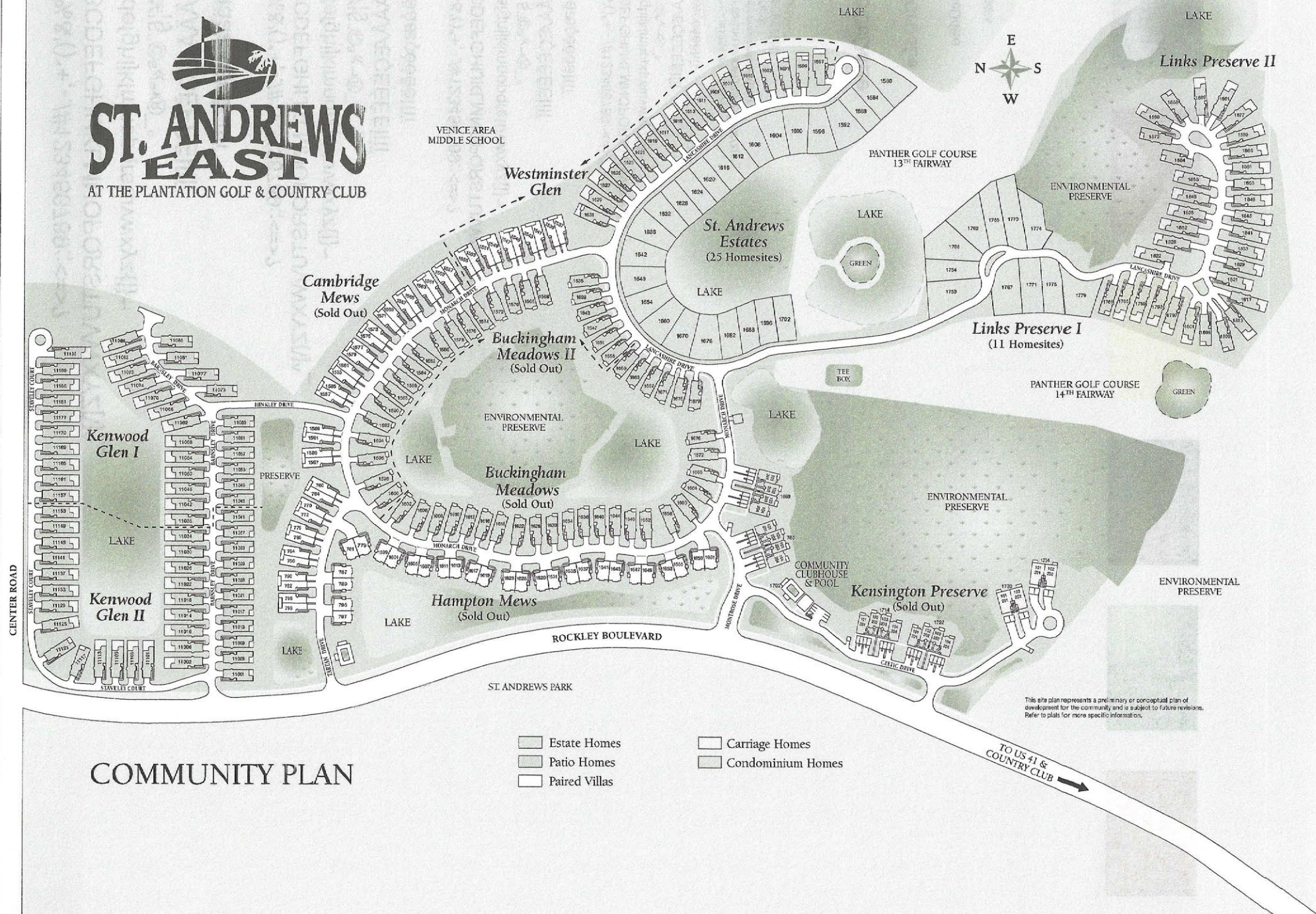
Westminster Glen

Home on Celtic

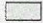
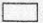
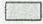

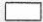


ST. ANDREWS EAST

AT THE PLANTATION GOLF & COUNTRY CLUB



COMMUNITY PLAN

- | | |
|---|---|
|  Estate Homes |  Carriage Homes |
|  Patio Homes |  Condominium Homes |
|  Paired Villas | |

This site plan represents a preliminary or conceptual plan of development for the community and is subject to future revisions. Refer to plans for more specific information.